

4" Single Station

HIGH QUALITY WITHOUT THE HIGH PRICE!

PWS-4600



Experience the **PWS-4600** and unleash superior clamping power at a fraction of the cost!

The **PWS-4600** features an innovative angled slide and locking jaw design that minimizes jaw lift, guaranteeing **repeatability** for **accurate** clamping every time.

FEATURES:

Jaw Width: 4 inches

Max Jaw Opening: 6 inches

Clamping Force: Up to 7,000 lbs

Clamping Repeatability: Within 0.001"

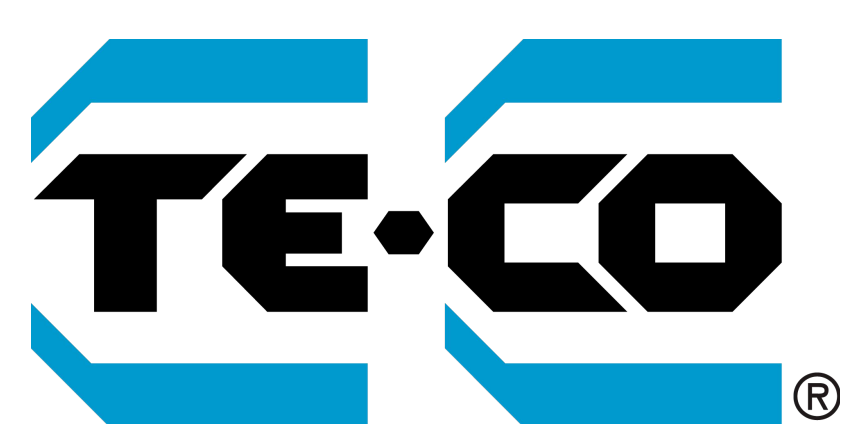
Bed Height: 2.250" \pm 0.0005"

- ✓ Hardened vise bed and jaw plates, ensuring long-lasting performance & resistance to wear
- ✓ 80,000 psi ductile iron body for maximum rigidity
- ✓ Sealed and lubricated thrust bearing for maximum life and minimum torque
- ✓ Outside rails of the vise body are machined within 0.0005" (0.013mm) square to jaw
- ✓ Footprint and keyway-to-jaw distance adheres to industry standard, ensuring compatibility



Contact us today for more information!

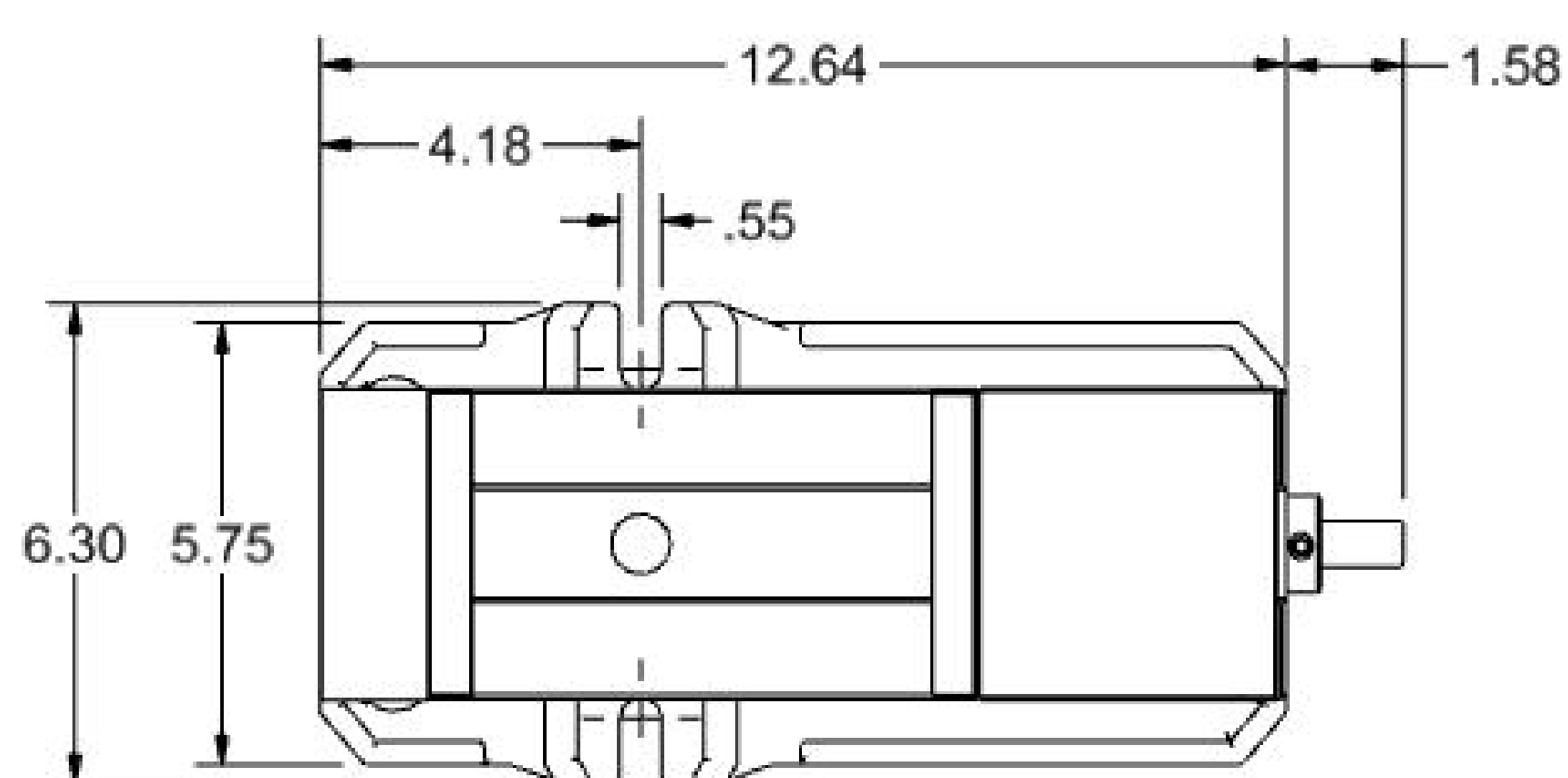
(855) 499-6454 | www.TE-CO.com



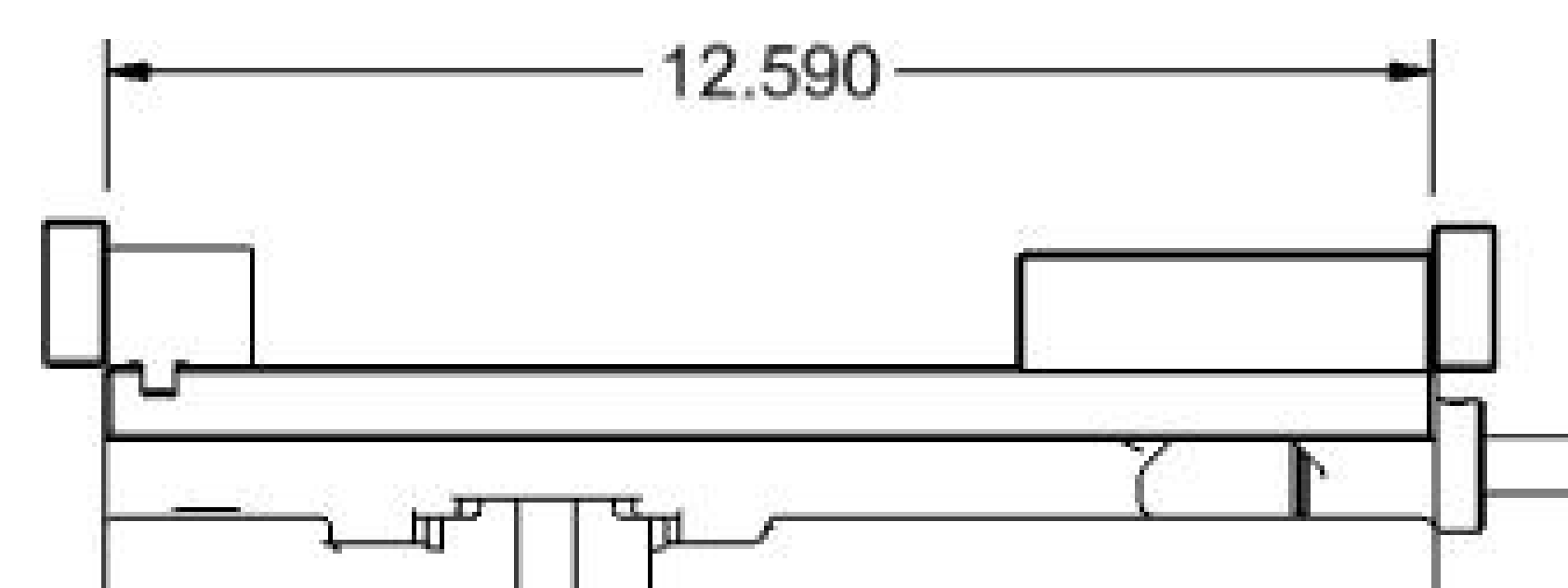
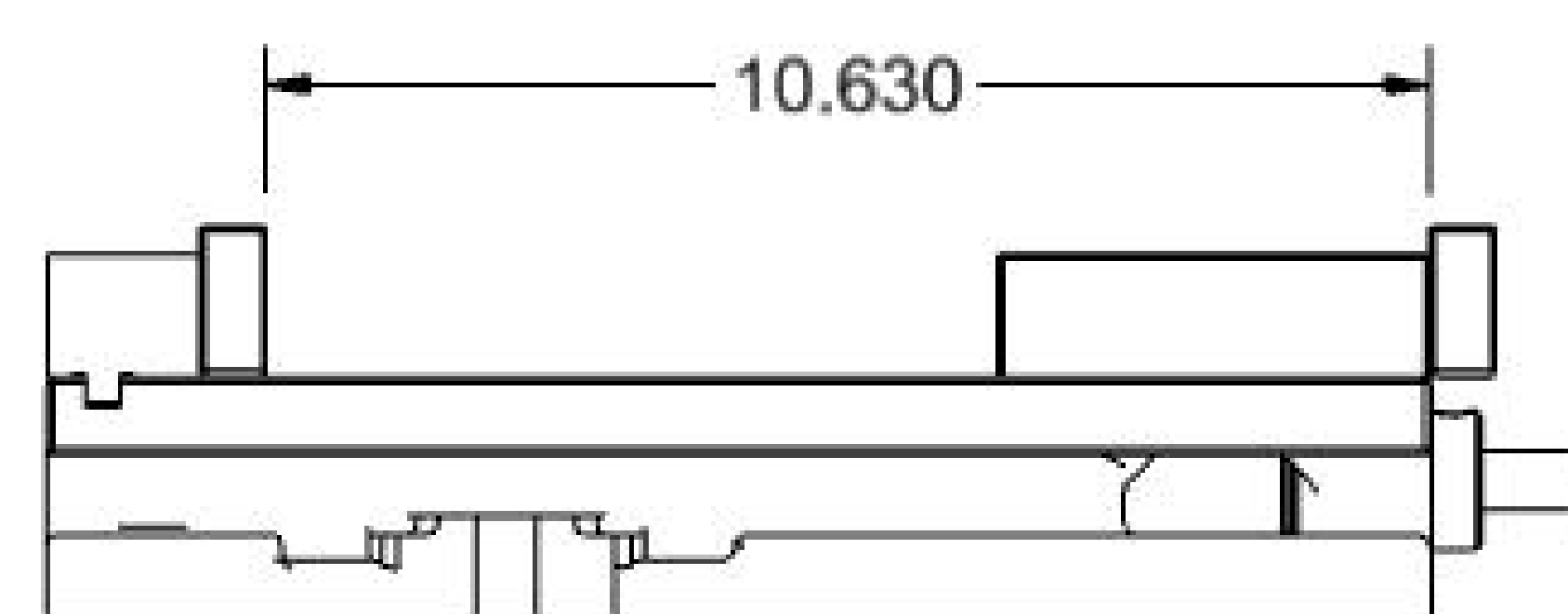
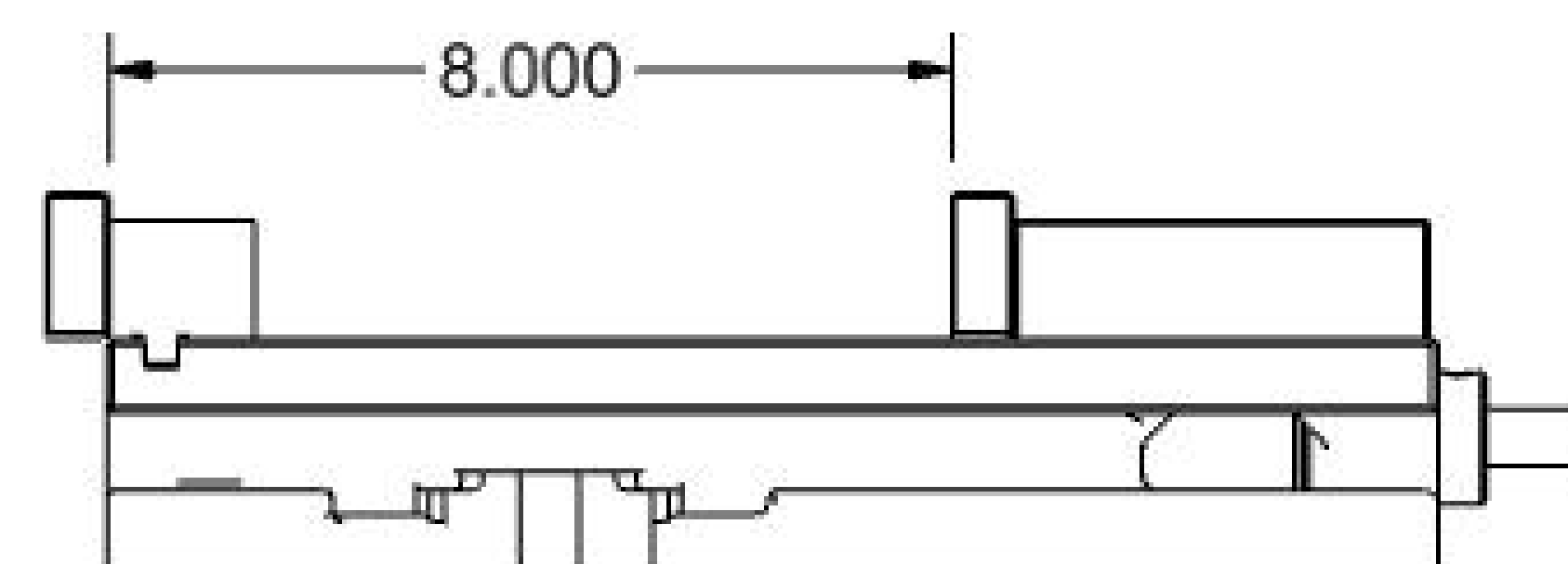
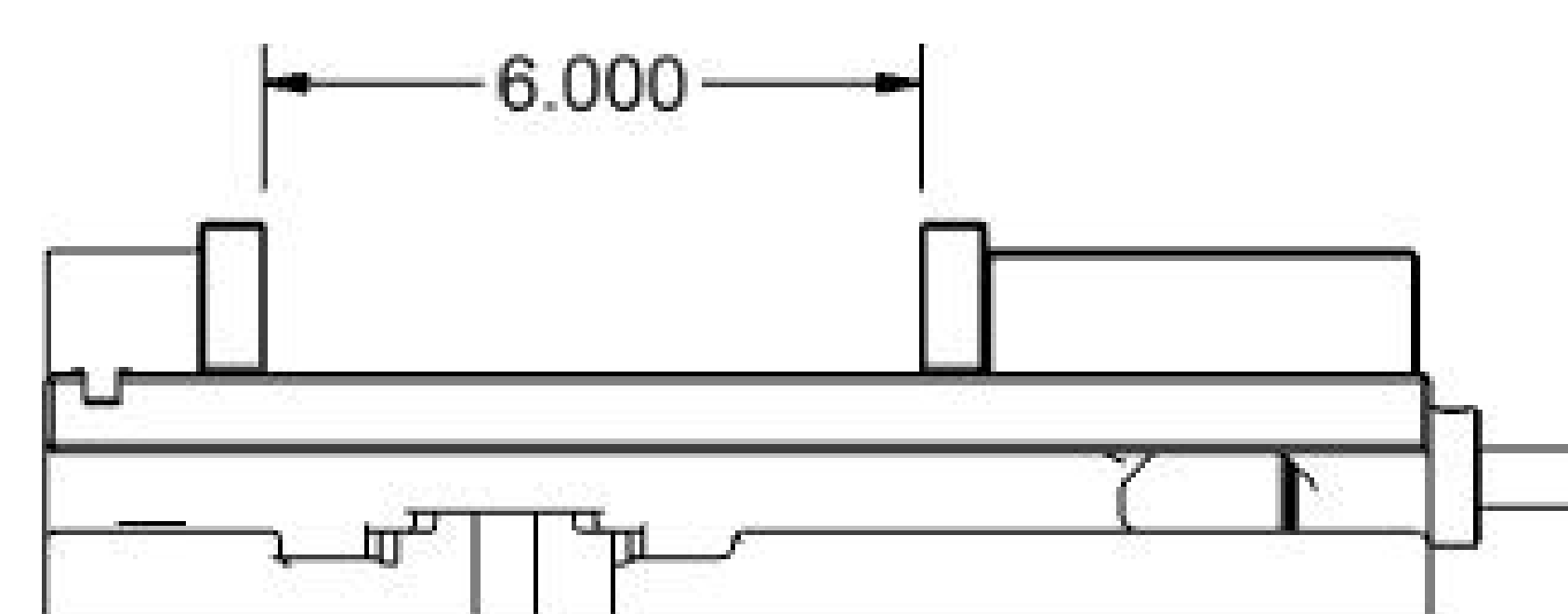
Specifications

4" SINGLE STATION VISE PWS-4600 SPECIFICATIONS

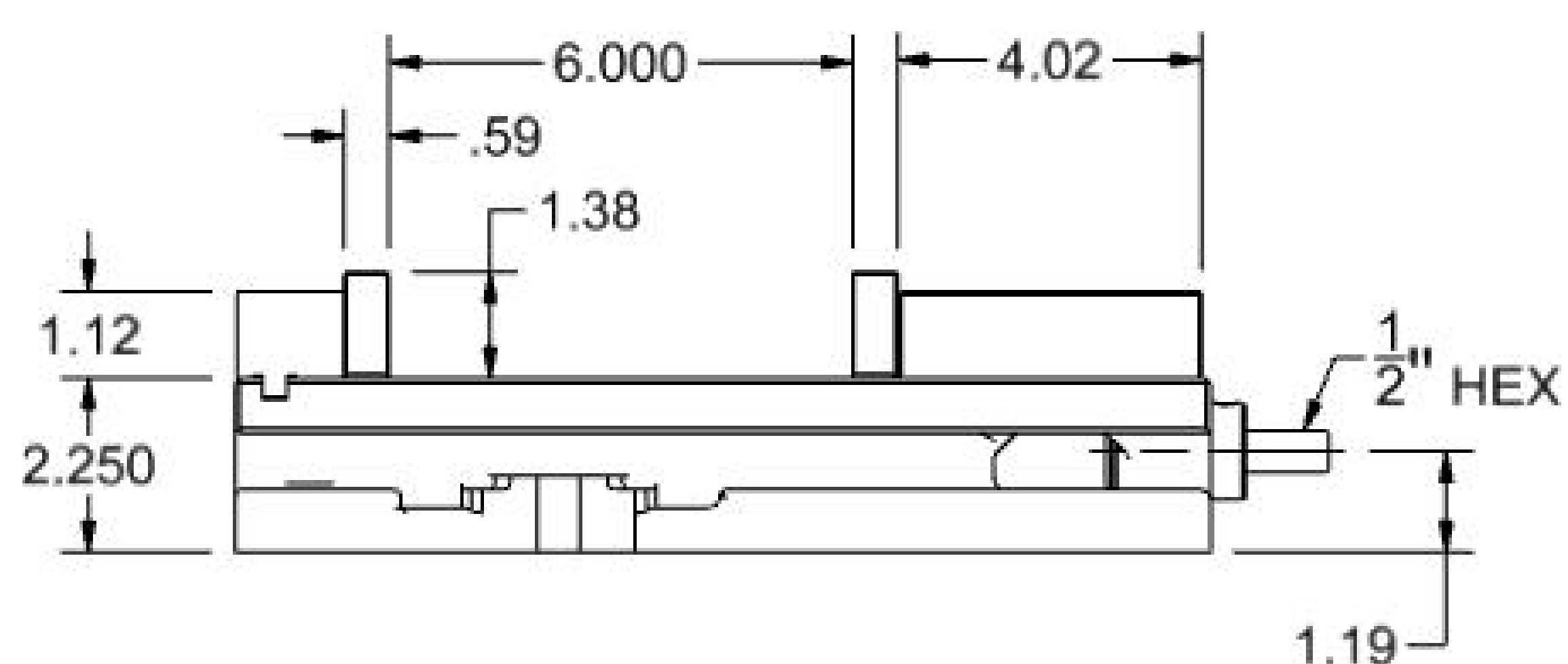
TOP VIEW



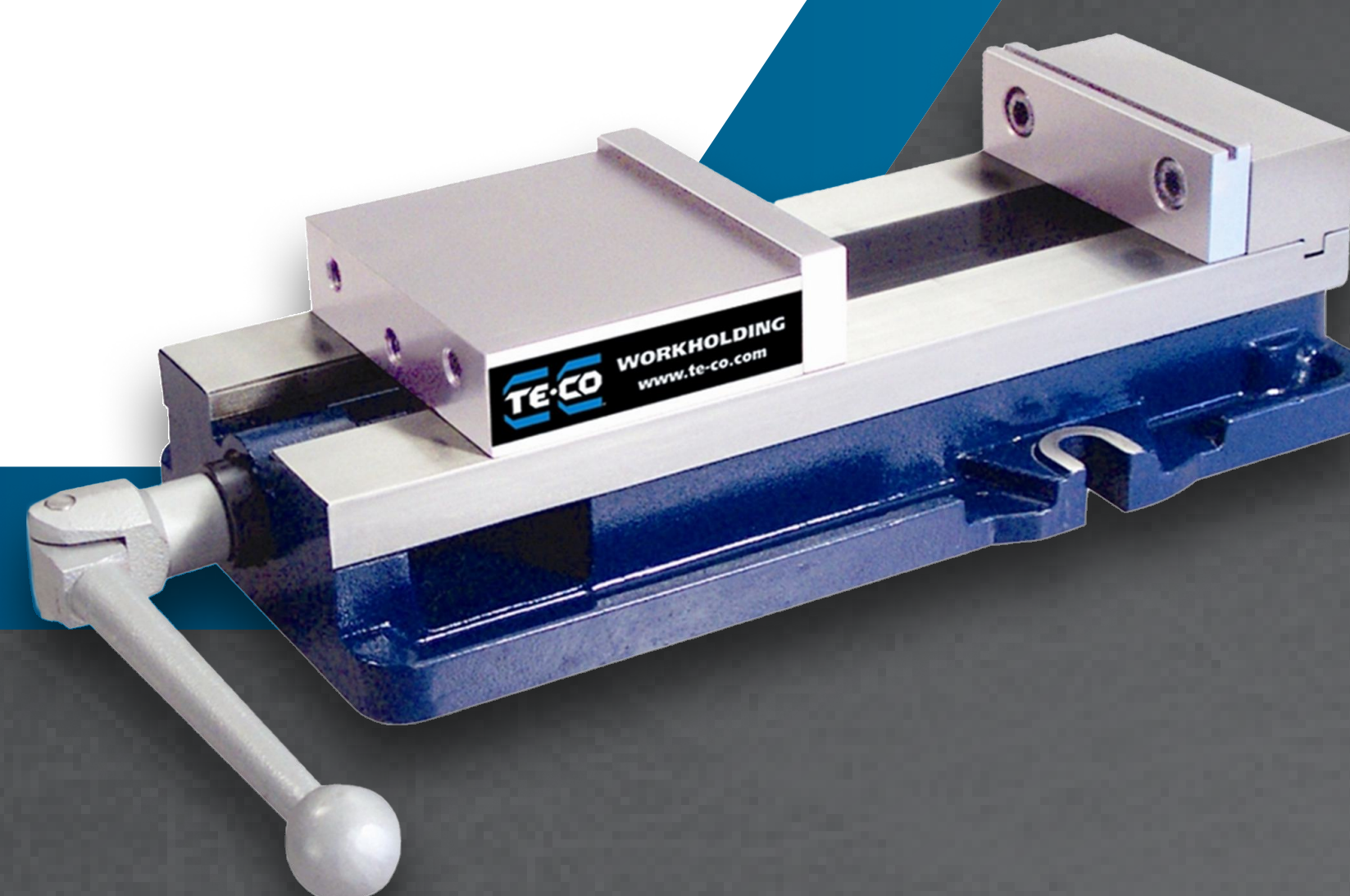
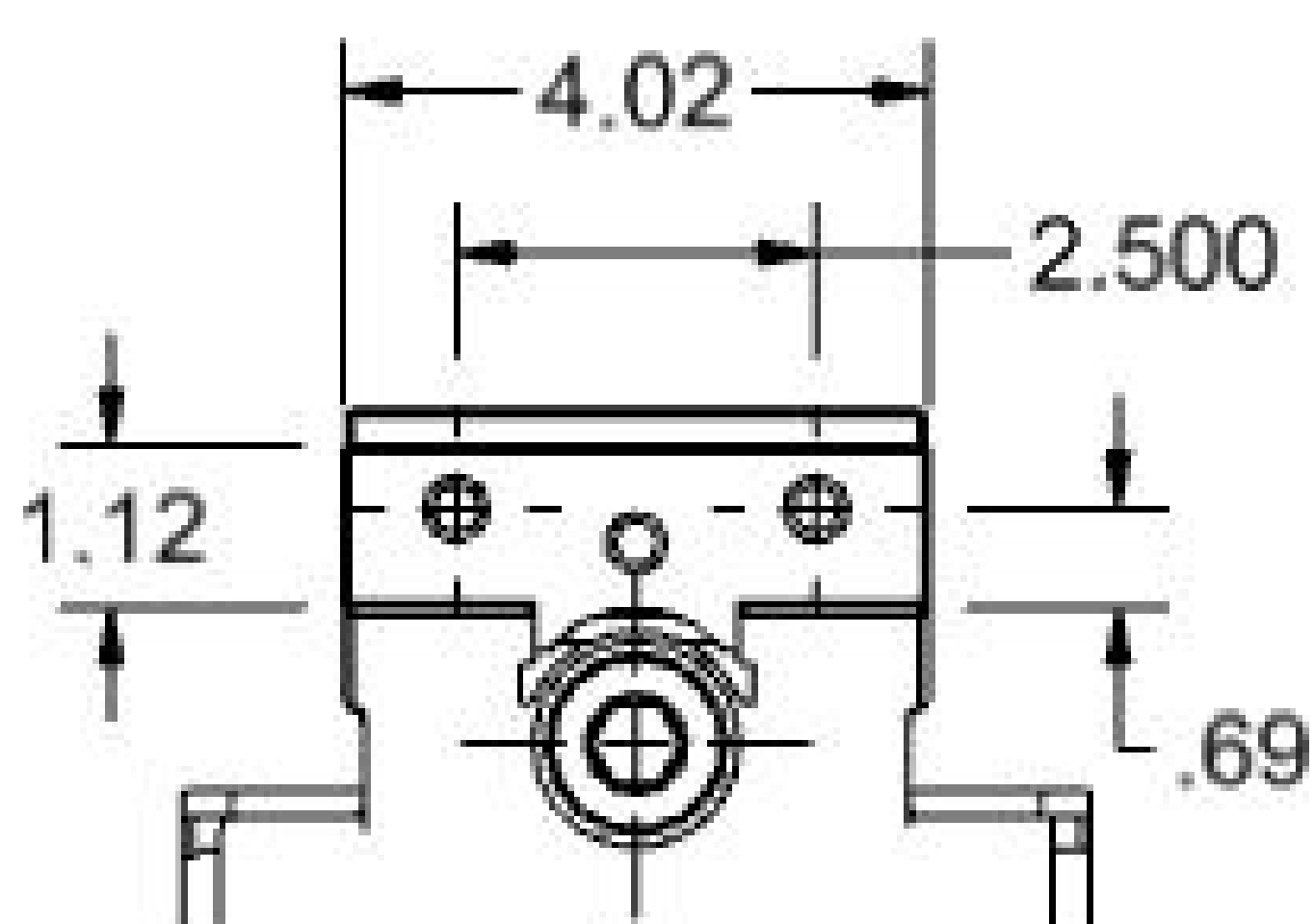
JAW PLATE POSITION



SIDE VIEW



FRONT VIEW



Learn more about
the **PWS-4600**



Contact us today for more information!

(855) 499-6454 | www.TE-CO.com