

# 6" Single Station

HIGH QUALITY WITHOUT THE HIGH PRICE!

## PWS-6900



Experience the **PWS-6900** and unleash superior clamping power at a fraction of the cost!

The **PWS-6900** features an innovative angled slide and locking jaw design that minimizes jaw lift, guaranteeing **repeatability** for **accurate** clamping every time.

## FEATURES:

**Jaw Width:** 6 inches

**Max Jaw Opening:** 9 inches

**Clamping Force:** Up to 8,200 lbs

**Clamping Repeatability:** Within 0.001"

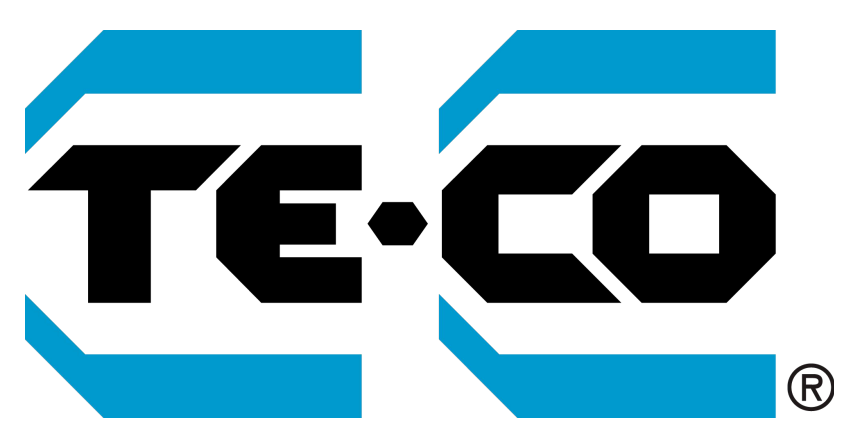
**Bed Height:** 2.875"  $\pm$  0.0005"

- ✓ Hardened vise bed and jaw plates, ensuring long-lasting performance & resistance to wear
- ✓ 80,000 psi ductile iron body for maximum rigidity
- ✓ Sealed and lubricated thrust bearing for maximum life and minimum torque
- ✓ Outside rails of the vise body are machined within 0.0005" (0.013mm) square to jaw
- ✓ Footprint and keyway-to-jaw distance adheres to industry standard, ensuring compatibility



Contact us today for more information!

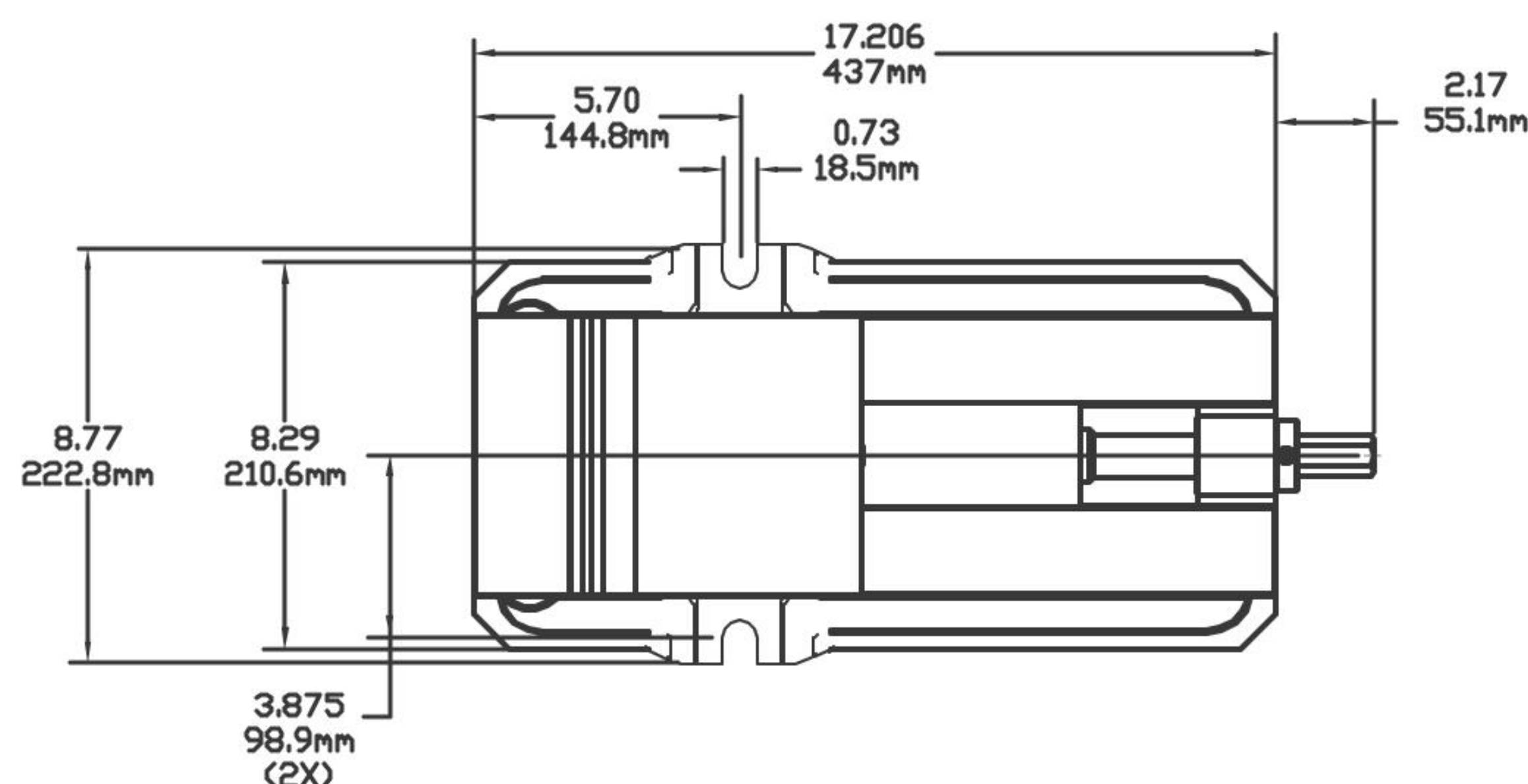
(855) 499-6454 | [www.TE-CO.com](http://www.TE-CO.com)



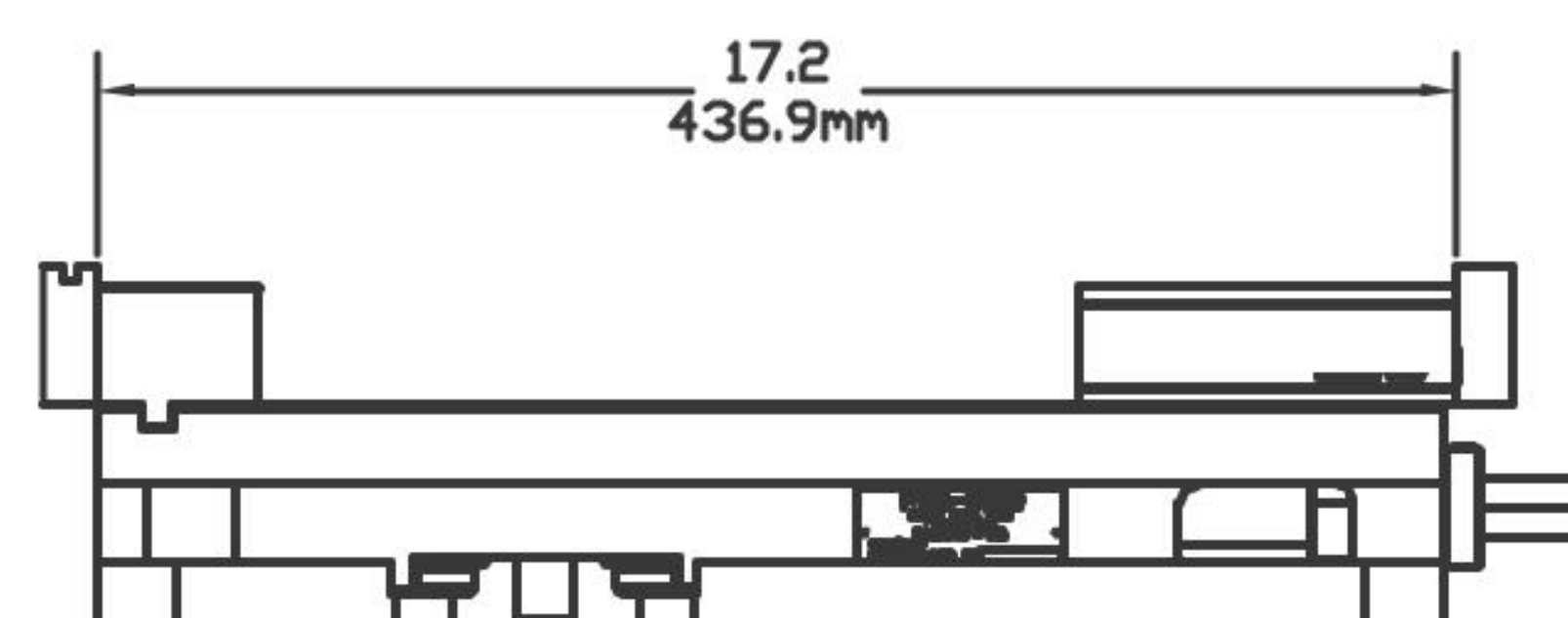
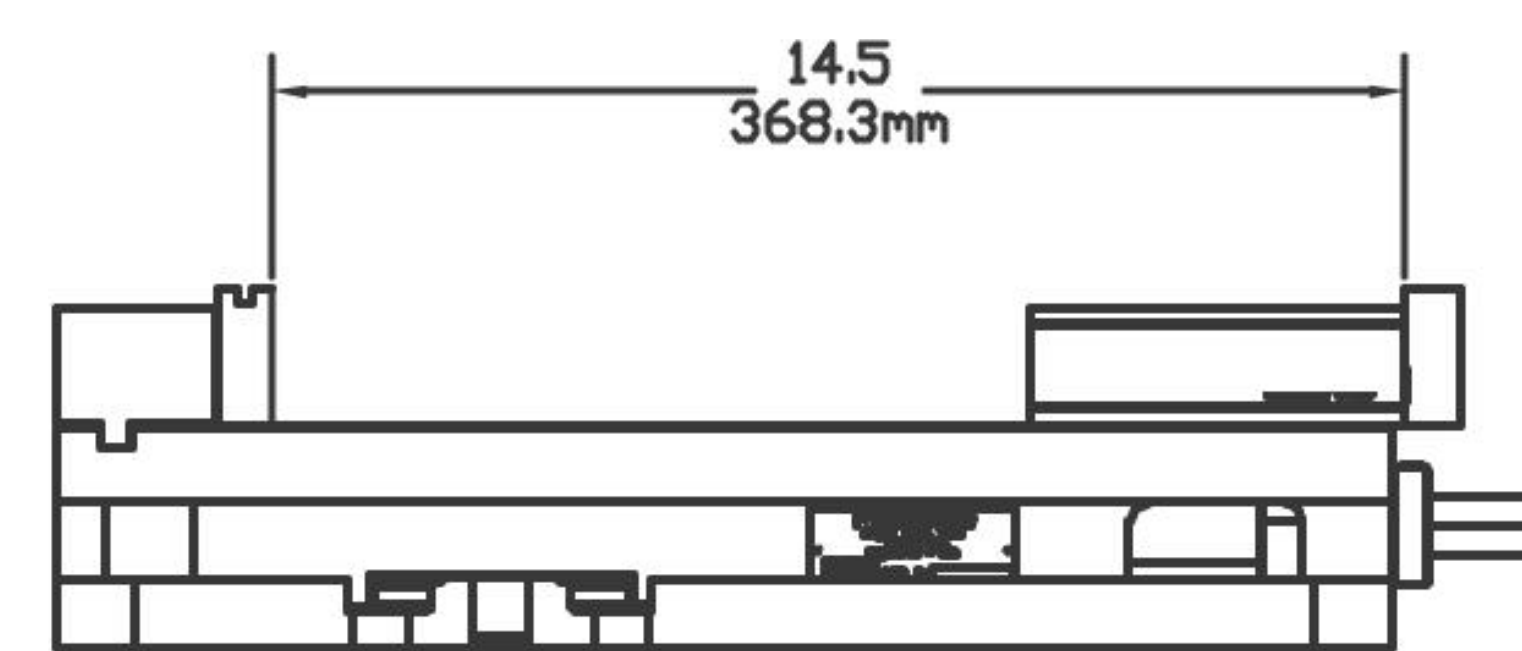
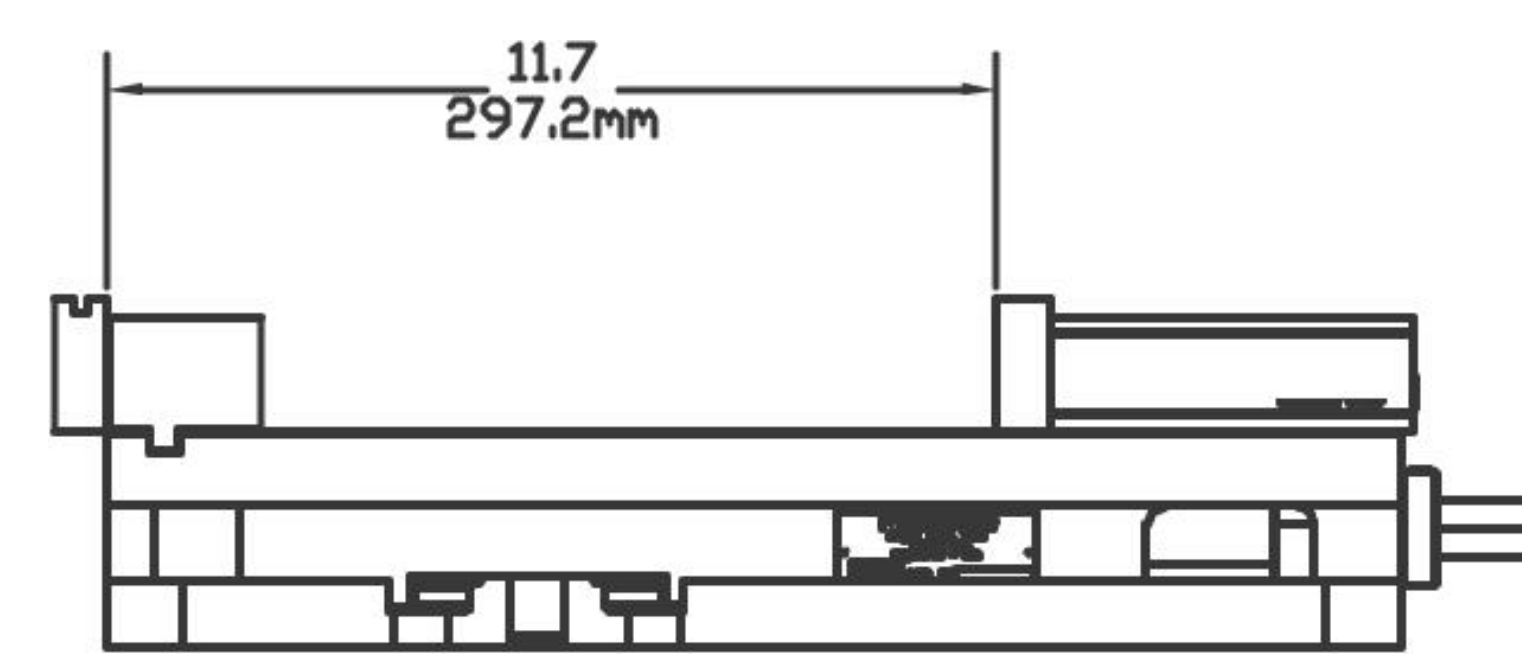
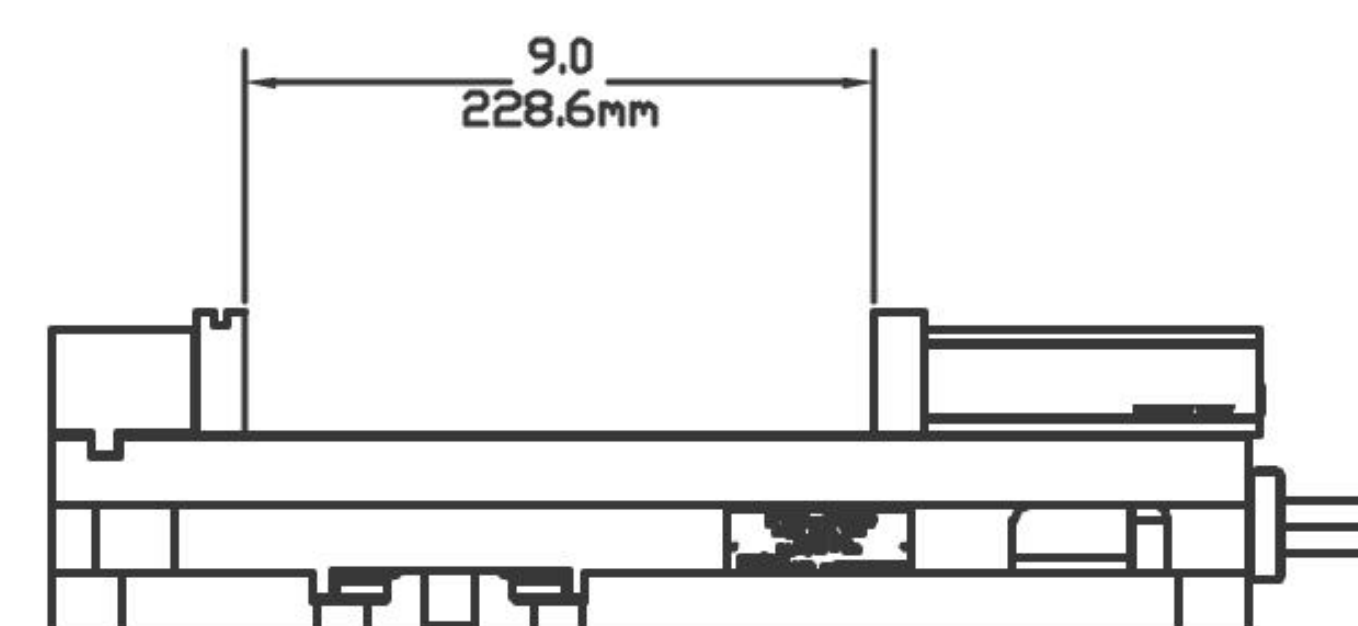
# Specifications

## 6" SINGLE STATION VISE PWS-6900 SPECIFICATIONS

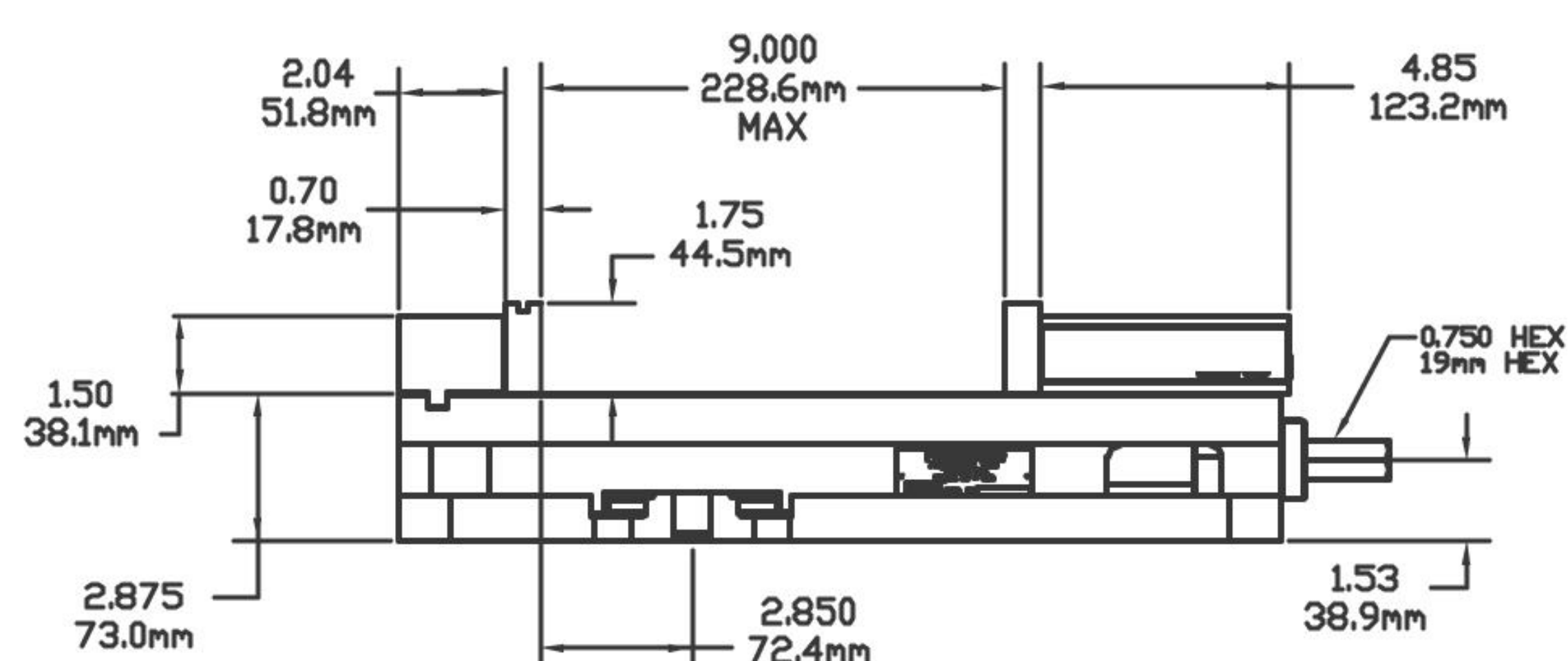
### TOP VIEW



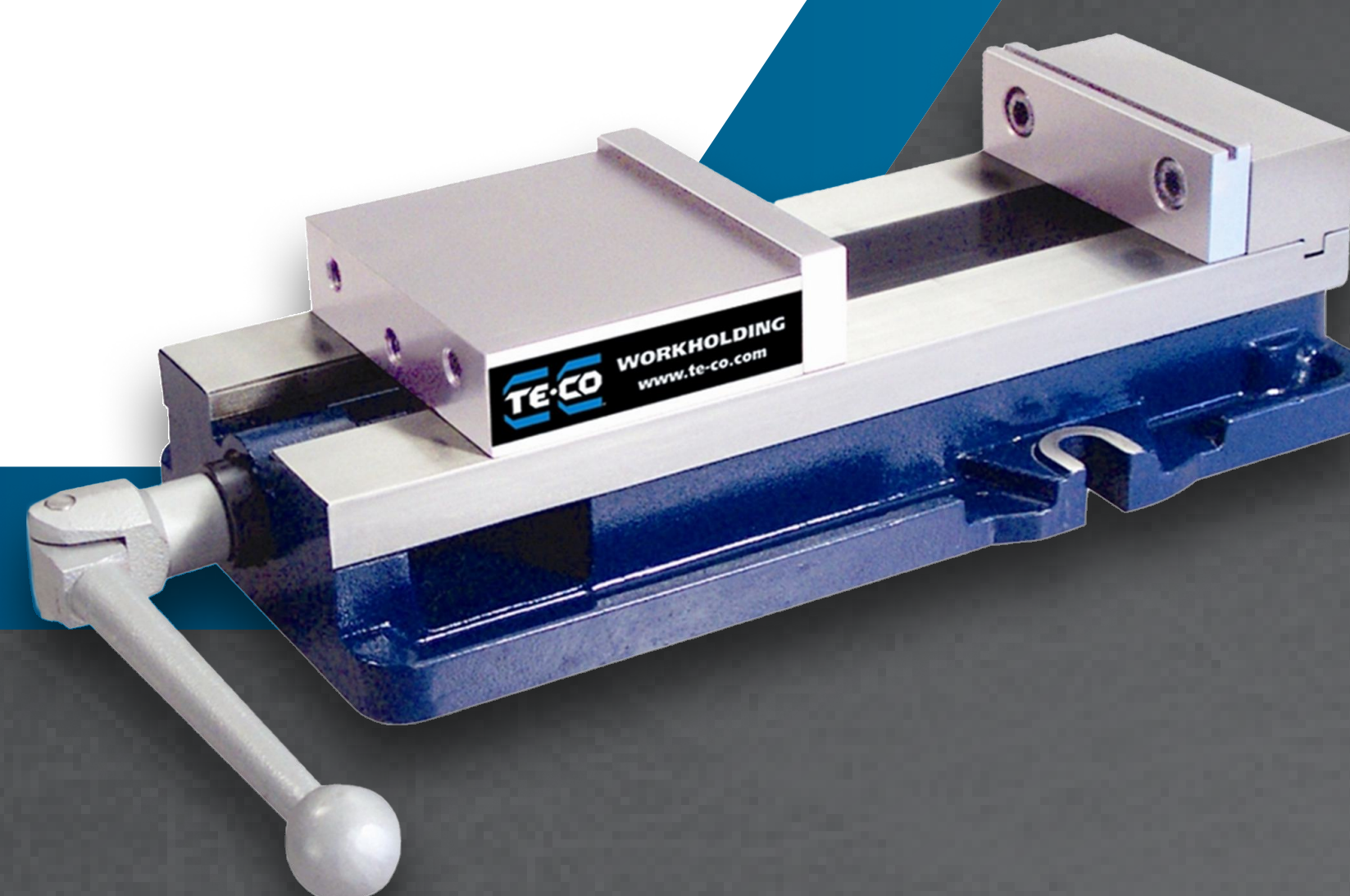
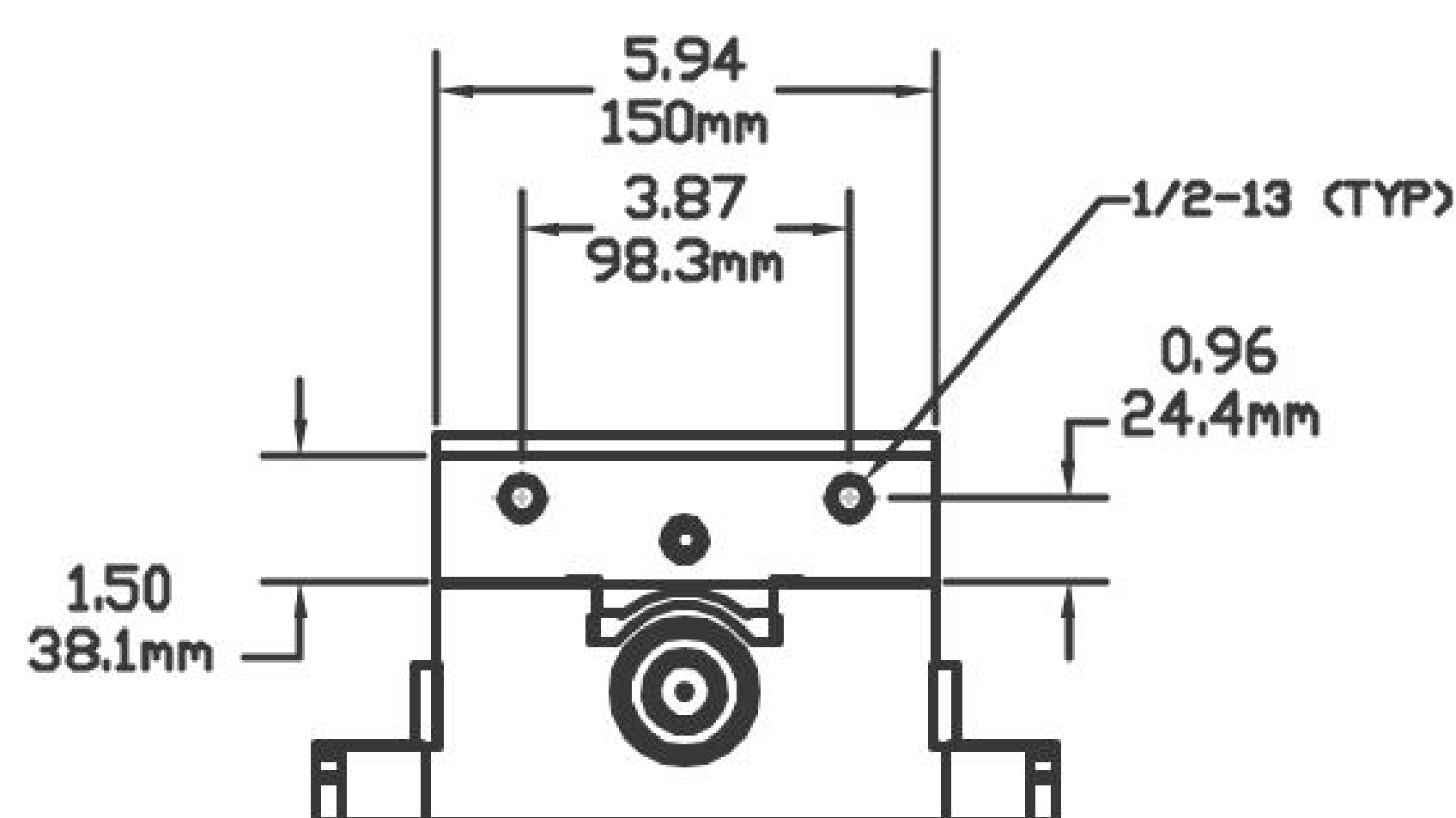
### JAW PLATE POSITION



### SIDE VIEW



### FRONT VIEW



Learn more about  
the **PWS-6900**



Contact us today for more information!

(855) 499-6454 | [www.TE-CO.com](http://www.TE-CO.com)